

Tower Chimes

*First Presbyterian Church
Of Winter Haven*



For nearly two decades, First Presbyterian Church has been a Stephen Ministry congregation.

On Sunday, April 25, we will continue this tradition of one on one Christian caring as we commission our next class of skilled, trustworthy, compassionate, and full of faith Stephen Ministers. Please plan to join us in worship to recognize **Judy Tully, Angela Arnold, Lelia Gray, Isobel Hubbard, Sharon Mitchell, Barbara Perkins, Jean Strang, Carol Switalski, Ben Tucker and Judy Tucker.**

Update of Session Special Appeal

All members of the congregation received a letter from the Session in early March outlining the need for additional funding toward our 2010 church budget. By early April, 78 families had responded in the form of an extra commitment pledge, and as a result 1/2 of the goal for the appeal was reached. The Session truly thanks everyone who has prayerfully considered the information included in that letter, and the regular and extra-commitment tithes and offerings given by our entire membership that enable us to be Christ's church here. In order to realize the staffing and program goals identified in the extra commitment appeal, more additional pledges are necessary. If God is leading you to help at this time, please return the extra commitment card that you received or that you will find in the information racks in the pews, or contact Lillian Harden (294-3121) in the church office. Thank you for your continued partnership in the ministry of First Presbyterian Church.



Spring has Sprung at First Presbyterian Church Sunday School Classes 2010

Sunday Mornings at 9:45 a.m.

Preschool Children will meet in CE108 for their fabulous Sunday school time filled with singing, crafts, and a Bible story.

Children in kindergarten through fifth grade will focus on *Forgiveness* during the Workshop Rotation. During this six week lesson, children will be able to experience the Bible story through computers, art, science, storytelling, cooking, and movies.

Middle School and High School Youth will meet in the Student Center as they share in discussions that focus on the major events and teachings in Jesus' life. Both groups meet together for a time of prayer and fellowship and then break into two separate groups for sharing. These classes are taught by a rotation of volunteers from our congregation.

Adult Sunday School Classes

The Perspectives Class started a new book on Sunday, April 11, *The Will of God* by Leslie D. Weatherhead. Tragedy befalls and leaves us confused. Life doesn't turn out as we had planned. World events bring unspeakable horrors into the lives of innocent people. The unimaginable happens and we are left asking, "Why? Why did God let this happen? Why didn't God heal my loved one? Why did God give me these desires and no way to fulfill them?" Dr. Jim Threlkel and Mr. Glenn Thomas facilitate this class. The books are available for purchase for \$6. This class meets in Geneva Room.

Ancient Israel and Early Judaism - Join discussion leader Bob Hubbard in a study of the history, literature, and religion of ancient Israel and early Judaism as presented in the pages of the Old Testament. This will not be your typical Bible study class! It will center around a lecture series presented on DVD by Professor Amy-Jill Levine of Vanderbilt University Divinity School. Although this is a college level course, Dr. Levine has a delightful and very down-to-earth teaching style that anyone will be able to understand and learn from. The class will run for 24 weeks, through May 23, 2010. Each lecture lasts about 30 minutes and will be followed by class discussion or question time. Come join us in the Edinburgh Annex for this fascinating and eye-opening journey through the pages of Part One of the world's best-selling book.

Having a Mary Heart in a Martha World written by Joanna Weaver is the book study led by Lori Grode. This class will focus on finding intimacy with God in the busyness of life and meets in CE Room 207. Books are available for purchase.



Vacation Bible School

High Seas Expedition will be held July 11-15, 2010 from 6:15 – 8:30 p.m. Please mark your calendars for this EXPLOSIVE week of faith, fun, and friends for the entire family!

Kidz Summer Escape Program registration has begun. This six week long program meets every Tuesday and Wednesday for six weeks. The program starts on June 15 through Wednesday, July 21. Children ages three through kindergarten graduates are invited to participate. A donation of \$160 is asked for at the time of registration. Please call Amy Smith if you have any questions (294-3121).

Our Purpose

As a congregation of the Presbyterian Church (USA), First Presbyterian Church of Winter Haven exists to show God's kingdom to the world as we

...Share the good news of what God has done in Jesus Christ

...Develop and nurture God's children into disciples

...Provide a place and a program for praising God

...Live our lives according to the Word, guided by the Spirit

...Commit to justice for all God's people.

Adopted by Session, 2003

First Presbyterian Church
637 6th Street, NW
Winter Haven, FL 33881
Ph: 863-294-3121
Fx: 863-294-1105

This newsletter is published weekly
Summer months and holidays published bi-weekly
Church dated material, please deliver by 04/24/2010

Non-profit Org.
U.S. Postage Paid
Permit No. 1162

On Wednesday, April 28 and Sunday, May 2, our youth groups will be working in conjunction with Papa John's Pizza to raise money to help fund our youth ministry trips. On these two specific dates, Papa John's will be donating a portion of their sales to support our youth groups. Here is how it works: The Papa John's located on Cypress Gardens Blvd (near Publix & Bank of America) will donate 20% of the sales from anyone who places an order on April 28 or May 2 and mentions First Presbyterian Church. Orders can be made all day on the 28th and all day on the 2nd and it does not make any difference whether they are carry out or delivery, as long as First Pres is mentioned. The youth group members will be distributing coupons for \$3 off any order to be used on these days. Please feel free to ask our youth for a coupon when you see them. Also, a coupon will be mailed along with the Tower Chimes later in the month. If you would like more coupons for your place of employment, another organization, or if you have any questions, please feel free to contact our Director of Student Ministries Josh Peters, (863) 294-3121 or jpeters@firstpreswh.org. Every penny raised will help support our youth ministry by providing a safe place and program for youth to live out their faith. Thank you for all that you do to support the youth ministry and if you enjoy pizza, then we hope you'll join us for our pizza nights!



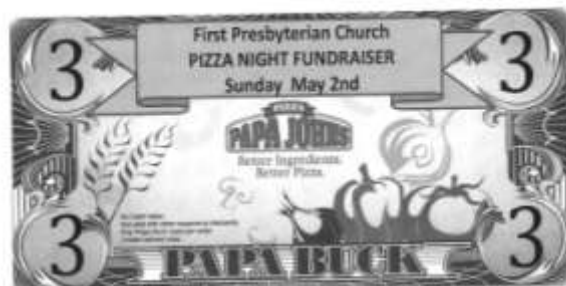
THIS PAPA BUCK IS A \$3 OFF COUPON VALID TOWARDS PIZZA AT REGULAR MENU PRICE
PROCEEDS FROM THIS FUNDRAISER ON April 28th ARE DONATED TO First Presbyterian Church

Raising Money for projects isn't easy. That's why the Team Members of Papa John's Pizza want to make a dinner date with you! When you order Papa John's Pizza on fundraiser nights, not only will you be feeding your family a hot and nutritious meal, but you will also be helping your church raise money.

When placing your order on fundraiser nights, mention that you're ordering for your church and Papa John's will donate a portion of the proceeds to your church.

Papa John's 293-7500 Web Orders are welcome at www.papajohns.com

Type your church name in the delivery remarks to credit the fundraiser!



THIS PAPA BUCK IS A \$3 OFF COUPON VALID TOWARDS PIZZA AT REGULAR MENU PRICE
PROCEEDS FROM THIS FUNDRAISER ON May 2nd ARE DONATED TO First Presbyterian Church

Raising Money for projects isn't easy. That's why the Team Members of Papa John's Pizza want to make a dinner date with you! When you order Papa John's Pizza on fundraiser nights, not only will you be feeding your family a hot and nutritious meal, but you will also be helping your church raise money.

When placing your order on fundraiser nights, mention that you're ordering for your church and Papa John's will donate a portion of the proceeds to your church.

Papa John's 293-7500 Web Orders are welcome at www.papajohns.com

Type your church name in the delivery remarks to credit the fundraiser!

Come and See

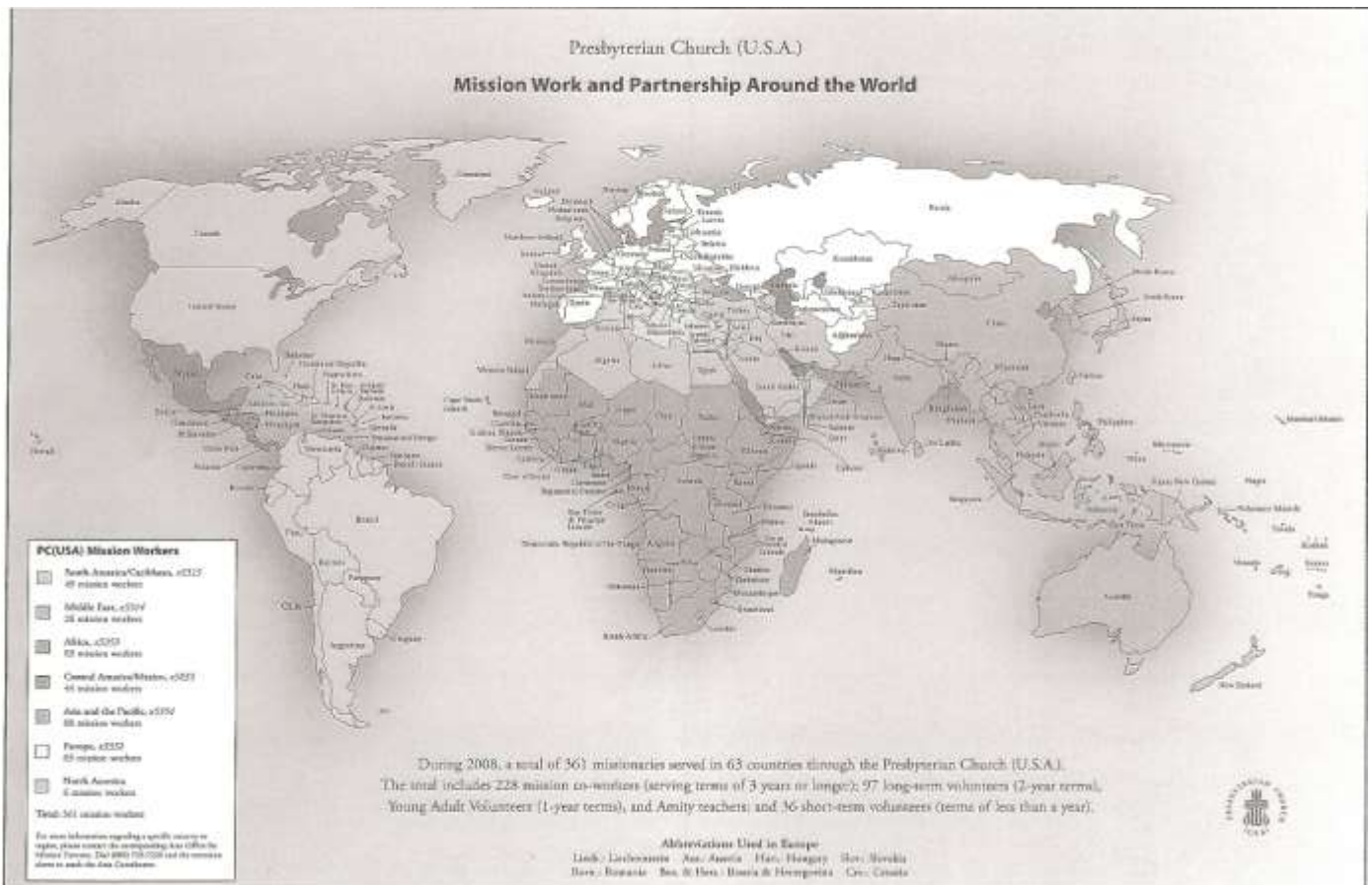
What God is Doing in World Mission

In the Great Commission recorded at the end of Matthew's gospel (Matthew 28:18-20), Jesus gives the church a part of its mission statement as he tells his followers to "Go and make disciples of all nations, baptizing them and teaching them to observe all that he commanded them." Many churches have answered this calling, in part by sending missionaries out in the name of Jesus Christ. The Presbyterian Church (USA) is one such church.

While ministry in the Winter Haven area is one of great importance to our church and its members, we also believe that God calls us to serve and witness throughout the world. One way our church has helped make disciples in all nations, is our mission connection with the Presbytery of Honduras. Every other summer, senior high young people and adults from our congregation travel in mission to Honduras (we have taken six such trips in the past 11 years). The work has included building church buildings and homes for the pastors, improving the homes of impoverished Telupan Indians and ministering alongside our Honduran brothers and sisters by conducting church based medical clinics in remote villages.



In addition to our direct contact in sending missionaries from our church to Honduras, as a congregation of the Presbyterian Church (USA), we are partners with 800 missionaries serving in 80 countries. The Presbyterian Church also has established over 400 educational institutions around the world and 70 hospitals in 40 countries beyond the United States. Presbyterians have sent disaster recovery assistance to 40 countries abroad and 25 states at home.



In the Presbytery of Tampa Bay (the 75 churches in the region that extends from St. Petersburg to Yankeetown to Lake Hamilton), new churches are being organized, and disciples are being nurtured at the Cedarkirk Camp and Conference Center, Beth-El Farmworker Ministry, Eckerd College and the Campus Ministry at USF in Tampa.



Cedarkirk



Beth-El

This work beyond Winter Haven is made possible in part by the gifts that we give each week as we bring God's tithes and our offerings.

In 2009, our congregation donated:

\$7,047.50 to One Great Hour of Sharing

\$8,132.16 in 3 Cents-A-Meal (for hunger ministries)

\$4,775.00 to the Honduran Partnership and scholarship for Honduran children

\$15,095.00 for per capita support for the operations of the Presbytery, Synod and General Assembly of the Presbyterian Church (USA)

\$37,225.00 for missionaries and mission projects of the Presbyterian Church around the world

During 2010 our own church budget includes benevolence support for Presbytery, Synod and General Assembly missions, and per capita support of the nuts and bolts of PC(USA) ministry beyond our local church.

If you feel that God is calling you to help make disciples around the globe, and want the gospel of Christ to be shared, prayerfully give to the ministry that we share with other Presbyterians through our church budget. To learn more about this ministry, you can go online at www.pcusa.org.